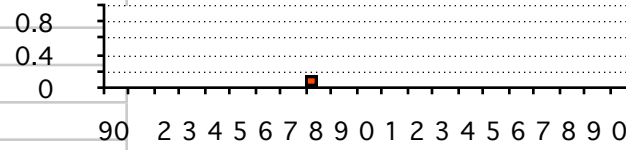


JUL	Prec.	Avg.
90	0.00	0.00
1	0.00	0.00
2	0.00	0.00
3	0.00	0.00
4	0.00	0.00
5	0.00	0.00
6	0.00	0.00
7	0.00	0.00
8	0.15	0.02
9	0.00	0.02
0	0.00	0.01
1	0.00	0.01
2	0.00	0.01
3	0.00	0.01
4	0.00	0.01
5	0.00	0.01
6	0.00	0.01
7	0.00	0.01
8	0.00	0.01
9	0.00	0.01

0

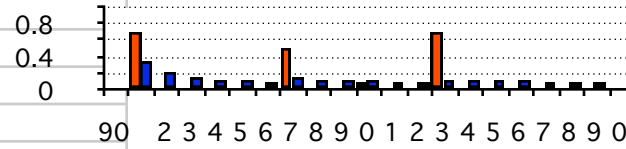
July Average 0.01



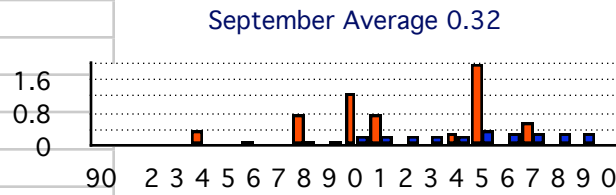
AUG	Prec.	Avg.
90	0.00	0.00
1	0.70	0.35
2	0.00	0.23
3	0.00	0.18
4	0.00	0.14
5	0.00	0.12
6	0.00	0.10
7	0.50	0.15
8	0.00	0.13
9	0.00	0.12
0	0.10	0.12
1	0.00	0.11
2	0.00	0.10
3	0.70	0.14
4	0.00	0.13
5	0.00	0.13
6	0.00	0.12
7	0.00	0.11
8	0.00	0.11
9	0.00	0.10

0

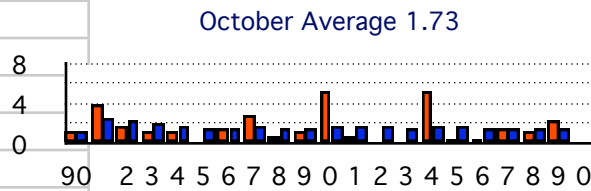
August Average 0.10



SEP	Prec.	Avg.
90	0.00	0.00
1	0.00	0.00
2	0.00	0.00
3	0.00	0.00
4	0.40	0.08
5	0.00	0.07
6	0.15	0.08
7	0.00	0.07
8	0.80	0.15
9	0.00	0.14
0	1.30	0.24
1	0.75	0.28
2	0.00	0.26
3	0.00	0.24
4	0.35	0.25
5	2.00	0.36
6	0.00	0.34
7	0.60	0.35
8	0.00	0.33
9	0.00	0.32



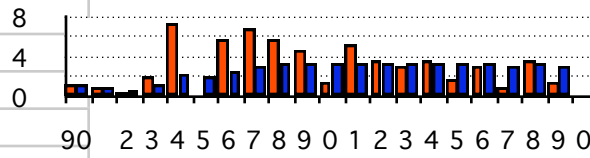
OCT	Prec.	Avg.
90	1.25	1.25
1	4.00	2.63
2	1.85	2.37
3	1.45	2.14
4	1.20	1.95
5	0.00	1.63
6	1.65	1.63
7	2.95	1.79
8	0.85	1.69
9	1.25	1.65
0	5.35	1.98
1	0.90	1.89
2	0.00	1.75
3	0.25	1.64
4	5.30	1.88
5	0.60	1.80
6	0.60	1.73
7	1.50	1.72
8	1.25	1.69
9	2.45	1.73



0		

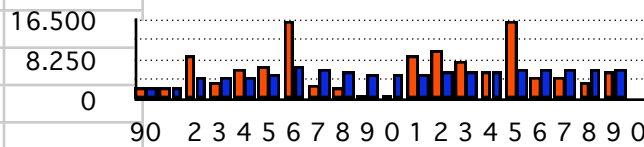
NOV	Prec.	Avg.
90	1.30	1.30
1	1.00	1.15
2	0.50	0.93
3	2.10	1.23
4	7.40	2.46
5	0.35	2.11
6	5.80	2.64
7	6.90	3.17
8	5.80	3.46
9	4.80	3.60
0	1.55	3.41
1	5.45	3.58
2	3.75	3.59
3	3.20	3.56
4	3.70	3.57
5	1.95	3.47
6	3.10	3.45
7	1.00	3.31
8	3.75	3.34
9	1.55	3.25

November Average 3.34



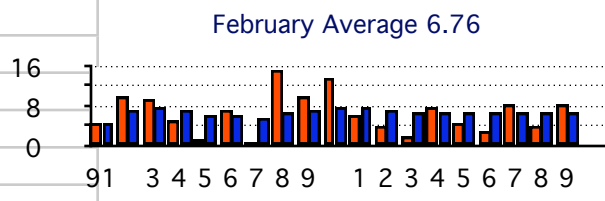
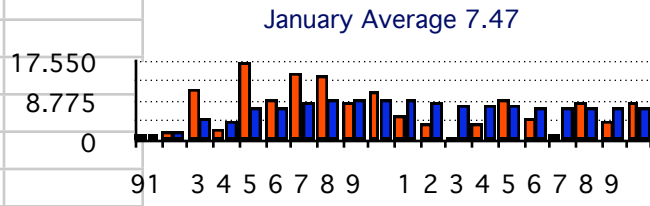
DEC	Prec.	Avg.
90	2.90	2.90
1	2.80	2.85
2	9.55	5.08
3	4.05	4.83
4	6.75	5.21
5	7.35	5.57
6	16.25	7.09
7	3.55	6.65
8	2.50	6.19
9	0.95	5.67
0	1.25	5.26
1	9.45	5.61
2	10.45	5.98
3	8.40	6.16
4	6.20	6.16
5	16.50	6.81
6	5.20	6.71
7	5.10	6.62
8	3.75	6.47
9	5.85	6.44

December Average 6.44



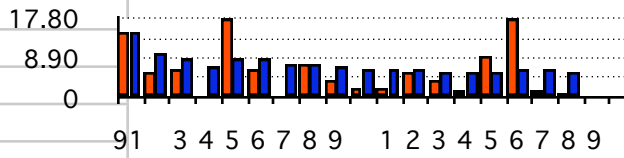
JAN	Prec.	Avg.
91	1.70	1.70
2	2.55	2.13
3	11.65	5.30
4	3.15	4.76
5	17.55	7.32
6	9.15	7.63
7	15.25	8.71
8	14.75	9.47
9	8.90	9.41
00	11.15	9.58
1	5.95	9.25
2	3.85	8.80
3	1.10	8.21
4	4.25	7.93
5	9.20	8.01
6	5.50	7.85
7	1.60	7.49
8	8.90	7.56
9	4.45	7.40
10	8.70	7.47

FEB	Prec.	Avg.
91	5.00	5.00
2	9.95	7.48
3	9.85	8.27
4	5.50	7.58
5	1.65	6.39
6	7.20	6.53
7	1.10	5.75
8	15.25	6.94
9	9.95	7.27
00	13.75	7.92
1	6.35	7.78
2	4.10	7.47
3	2.20	7.07
4	7.85	7.12
5	4.60	6.95
6	3.25	6.72
7	8.60	6.83
8	4.05	6.68
9	8.30	6.76
10		



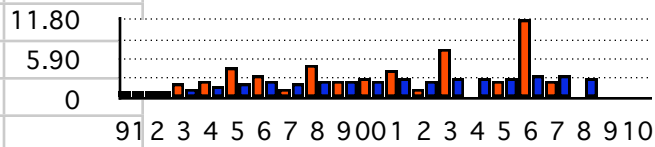
MAR	Prec.	Avg.
91	15.00	15.00
2	5.65	10.33
3	6.75	9.13
4	0.25	6.91
5	17.80	9.09
6	6.60	8.68
7	0.40	7.49
8	7.65	7.51
9	3.95	7.12
00	2.40	6.65
1	2.35	6.25
2	6.05	6.24
3	3.90	6.06
4	1.50	5.73
5	9.45	5.98
6	17.80	6.72
7	1.75	6.43
8	0.90	6.12
9		
10		

March Average 6.12



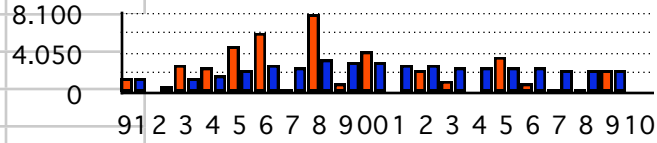
APR	Prec.	Avg.
91	1.05	1.05
2	1.20	1.13
3	2.45	1.57
4	2.85	1.89
5	4.80	2.47
6	3.65	2.67
7	1.75	2.54
8	5.10	2.86
9	2.70	2.84
00	2.95	2.85
1	4.35	2.99
2	1.45	2.86
3	7.65	3.23
4	0.30	3.02
5	2.60	2.99
6	11.80	3.54
7	2.85	3.50
8	0.25	3.32
9		
10		

April Average 3.32



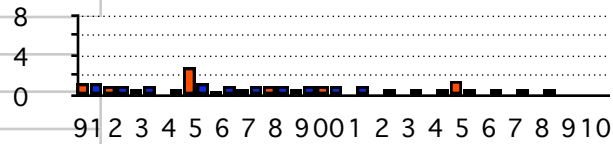
MAY	Prec.	Avg.
91	1.75	1.75
2	0.00	0.88
3	2.95	1.57
4	2.65	1.84
5	4.95	2.46
6	6.25	3.09
7	0.50	2.72
8	8.10	3.39
9	1.00	3.13
00	4.25	3.24
1	0.00	2.95
2	2.30	2.89
3	1.40	2.78
4	0.00	2.58
5	3.90	2.67
6	1.15	2.57
7	0.50	2.45
8	0.50	2.34
9	2.50	2.35
10		

May Average 2.34



JUN	Prec.	Avg.
91	1.25	1.25
2	1.00	1.13
3	0.80	1.02
4	0.20	0.81
5	2.85	1.22
6	0.40	1.08
7	0.90	1.06
8	1.05	1.06
9	0.75	1.02
00	1.00	1.02
1	0.20	0.95
2	0.00	0.87
3	0.00	0.80
4	0.00	0.74
5	1.70	0.81
6	0.00	0.76
7	0.00	0.71
8	0.00	0.67
9		

June Average .67



10				
----	--	--	--	--